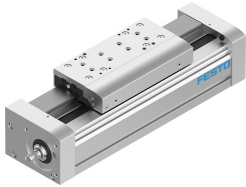


Ball screw linear actuator EGC-120-100-BS-25P-KF-0H-ML-GK

Part number: 3013578

FESTO



Data sheet

Feature	Value
Working stroke	100 mm
Size	120
Stroke reserve	0 mm
Screw diameter	25 mm
Spindle pitch	25 mm/U
Type code	EGC
Mounting position	Any
Guide	Recirculating ball bearing guide
Structural design	Electromechanical linear axis with ball screw
Motor type	Stepper motor Servo motor
Spindle type	Ball screw
Symbol	00991211
Max. acceleration	15 m/s ²
Max. speed	1.5 m/s ... 1.875 m/s
Repetition accuracy	±0.02 mm
Duty cycle	100%
Degree of protection	IP40
Ambient temperature	-10 °C ... 60 °C
2nd moment of area Ix	5010000 mm ⁴
2nd moment of area Iy	5820000 mm ⁴
2nd moment of area Iz	5010000 mm ⁴
Max. force Fy	6890 N
Max. force Fz	6890 N
Max. torque Mx	144 Nm
Max. radial force on actuator shaft	500 N
Max. feed force Fx	1500 N
Torsion moment of inertia It	1430000 mm ⁴
Mass moment of inertia JH per meter of stroke	2.756 kgcm ²
Feed constant	25 mm/U
Material of end caps	Wrought aluminum alloy Anodized
Moment compensator material	Wrought aluminum alloy Anodized
Profile material	Wrought aluminum alloy Anodized

Feature	Value
Note on materials	RoHS-compliant
Drive cover material	Wrought aluminum alloy Anodized
Slide carriage material	Steel
Guide rail material	Steel
Slide material	Wrought aluminum alloy Anodized
Spindle nut material	Steel
Spindle material	Steel